

# CELL

Education

NOVAH® EDU

# SCHOOL LIBRARY



In the information age, the function of library is changing from paying attention to the storage of books to the direction of human-centered learning. The storage that adorn sofa has bigger store space not only, also read the reader at the same time the space is separated from each other, ensure the reader also has his close intimate space when reading.

# CLASSROOM



People like to rule what to do on what occasions, and most people take it for granted to follow this rule. It is the same with reading. We must have a place where we can be free of distractions, so that we can be absorbed in the book. The straight cabinet of STORAGE creates a reading area for students in the corner of the classroom. The grid setting is scattered at random to create an eclectic effect, and it is also convenient to put books and decorations of different heights.

# SCHOOL LIBRARY



Through the modular combination, the storage cabinet can be quickly made through different combinations of different scenes for each of the modeling.

# SCHOOL LIBRARY



The straight structure of the Storage double-sided straight cabinet can be matched with a variety of shapes through combination, so that the library presents a sense of three-dimensional and spatial sense.

# SCHOOL LIBRARY



Storage single-sided bookshelf along the direction of the wall to extend, repair space defects, reshaping the space structure at the same time, color, style and the overall space.

---

# Specification

Surface Bookcase



Single-faced Bookcase



Double-faced Bookcase



Cambered Sofa



Straighted Sofa



Cambered Cushion



Screen



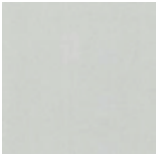
Identification Plate



---

# Fabrics

Cabinet Color Options:



M1



M21



M2



M7

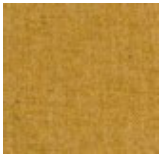
Sofa Upholstery Color Options:



SD24



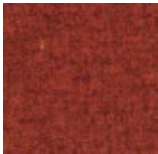
SD42



SD15



SD32



SD62

# CELL



**NOVAH System Technology Co.,Ltd.**

Tel: 400-115-1688

Web: [www.novah.cc](http://www.novah.cc)

Mail: [int@novah.cc](mailto:int@novah.cc)

**NOVAH<sup>®</sup>EDU**