



# HANDY

Collaborative

NOVAH

# Handy

HANDY Stool is a new auxiliary furniture designed by Stephen Philips and manufactured by SELLEX, which depending on the need, it adapts perfectly to different spaces and applications.





# Agility & Versatility,

To enrich your compact space.

HANDY Stool is a simple, compact yet technically sophisticated product.

It is super-versatile and therefore perfect for smart café's, in an agile office for quick, ad-hoc meetings, either at the desk or break-out spaces.



# Comfort & Ease,

## To care about your belongs

HANDY Stool is a friendly product to equip all type of environment, depending on its refined, sculptural shape, with dynamic feel and to use a single material for the structure. If you need to meet with a workmate, you could sit comfortably in the stool. As a novelty, HANDY Stool offers a space underneath the seat that can be used to tuck any bulk (bag, rucksack and so on) and, in this way, keep our belongings controlled.





# Light & Gentle,

To be easily stackable.



The main advantage of HANDY Stool is that it is stackable on ground up to 20 units. Because it is a stackable stool, it works well for flexible multi-purpose spaces. This feature makes it even more practical. In addition, its easy use and its lightweight are other highlighted features. HANDY Stool weight is only 3,3 kg which allows moving it from one side to another.





Models



Stool



Stool with Upholstery Pad

Measures



Details



Stackable



Interior capacity



Light

Options for Base’s color



HS-01



HS-02



HS-03



HS-04



HS-05



HS-06



HS-07

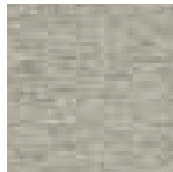
Options for Pad’s color



Sunday



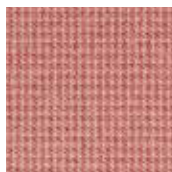
Medley



Mozart



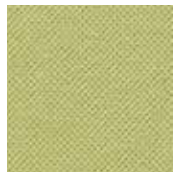
Slight



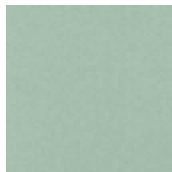
Bailey



Fighter



Atlantic



Super

# HANDY



**NOVAH System Technology Co.,Ltd.**

**Tel:** 400-115-1688

**Web:** [www.novah.cc](http://www.novah.cc)

**Mail:** [int@novah.cc](mailto:int@novah.cc)

**NOVAH**